

Water is life
Water is Life



**Integral drinking water
Vitalization with the plocherkat**

*Elixir of life, water
Water vitalization & hardness stabilization
Products with assembly instructions
Experience reports
Frequently asked questions
In use all over the world*



2025

Spring water structure from the tap



Roland Plocher
1940 - 2021

It is high time...

... to preserve our natural resources for the benefit of the next generation.

Dear Readers,

after 45 years of development, experience and practical application, it now gives me great pleasure to present this product and application brochure on the important theme of drinking water vitalisation. Looking forward, we would like to make people more aware of how important and necessary it is to think in holistic terms as well as to be sustainable in our actions. Our range of products offers numerous application possibilities which will enable you to enjoy a life in harmony with nature - both for your own benefit and for the benefit of our earth.

Warmest regards

Monika Junius

ONE OF NATURE'S
MYSTERIES

WATER

Water consists of two gases.
Nevertheless, it is a liquid.
How can a spring emerge at the top of a mountain?
Why does water freeze from the top downwards?
„Water is H₂O, two parts hydrogen, one part oxygen.
But there is also a third component which actually makes it into water,
and no-one knows what that is.“

David Herbert Lawrence (English poet)

... and for chemists water is only H₂O.



Water - for life

Since time immemorial water has had special symbolic value in view of its spiritual, resorbing and receptive qualities. Vital water contains a mass of intelligent micro-organisms.

„Do you drink enough vital water?“

It is recommended to drink 20 - 40 ml of pure water per kg of body weight daily, i.e. in the case of 70 kg body weight, the quantity would be c. 2.1 litres of still mineral water (cost c. €1.30 per day). So in a 2.5 person household, this means a total sum of c. €1200 per annum - just for mineral water!

So it is really worth comparing such a sum of money with the one-off costs for a plocherkat.

- **Water is one of our most important foodstuffs:**
It is important for our metabolism and inner cleansing, contains no calories and helps with weight problems.
- **Drinking a sufficient quantity of water increases the concentration ability.**

BACK TO THE STRUCTURE OF

SPRING WATER



Scientific methods of investigation:

- Crystal analysis (spagyric crystallizate)
- Droplet images according to Ruth Kübler (see page 12)

Crystal analysis (spagyric crystallizate)

Tap water Überlingen-Bamberg

Within the scope of a comparative study, the spagyric crystals, taken from distillate water and its mineral constituents, were examined.



Tap water

1 hour on plocher tischkat

Observation:

After only 1 hour on the plocher tischkat, considerably more pronounced crystal formation can be observed.

So water can again be
a source of energy

Water vitalisation

Water vitalisation according to ROLAND PLOCHER® Integral-technik makes it possible to revert water to its original, harmonious vital state.

The cluster structure changes in such a way that many „small water molecules“ are formed, thus providing a larger surface area. The larger the surface, the better the water can consequently function as a transport medium, puffer and regulator.

Hardness stabilisation

Crystallisation of tap water

Dr. Elmar Langenscheidt (Physicist)



Control:

Predominantly large, dendritic crystal formations (size: 1.6 mm total image height)



plocherkat:

The calcium crystals are small and individual. These remain suspended in the running water and no longer form deposits. In order to be able to observe the crystals, the image would have to be enlarged considerably. (Scale 0.13 mm complete image height).

Energy costs



Pipeline: 10 years old



6 months later
with plocherkat

We work and measure according to state-of-the-art technology,
and using scientifically recognised measuring techniques.

VITAL WATER

ROLAND PLOCHER® integral-technik: The highly effective water vitalisation system

Very satisfied users all over the world enjoy a better quality of life - whether in connection with drinking, cooking, bathing or washing. You, too, will soon realise that the water feels softer and tastes better! It is a real delight to drink a glass of vital water!

- no maintenance required
- permanent effect



plocherkat large

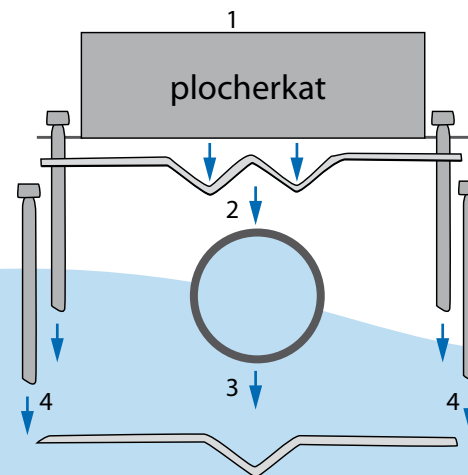
Since 1986 ROLAND PLOCHER® integral-technik, has been making it possible to bring vitalised water with the same structure as spring water into every household – irrespective of whether you live in a rented flat or have your own detached house. The plocherkat does not require any electrical power or magnetism. For households with a maximum daily water consumption of **1,5 m³**.

Dimensions:
26 cm x 12 cm x 3 cm, stainless steel
Art. No. hw 4611

plocherkat large

INSTALLATION

- no maintenance required
- permanent effect



Installation

The large plocherkat is simple to install by means of two contact metal plates and four screws flush against the water piping. 15 cm of free piping is sufficient for installation. It is not necessary to interfere with the water-pipe system. The pipe should be completely clean and free of any rust and dirt. Please tighten the screws well to ensure that the thin metal plates are positioned close against the piping!

- Clean collection and pressure tanks thoroughly prior to installation of the plocherkat!
- Screw onto the water pipe after the water metre/pressure regulator.
- After c. 14 days allow all water to run off through the pipes. Repeat the procedure if necessary.

Important information

- The plocherkat is not compatible with magnetic or electro-magnetic water treatment systems!
- Synthetic pipes will delay commencement of the effect.
- In the case of a magnetic field strength of over 100 nT (Nanotesla) at the place of installation, it is strongly recommended to optimise the earth electrode. It is also always recommendable to use the **plocher harmonizer** and the **plocher e-smog-angle**.

Installation example:



TO CLICK ON:
...also ideal for travelling!



plocherkat small

TO SCREW ON/CLICK ON:

ONLY for terminal devices and piping leading directly to the tap (e. g. under the sink unit), water consumption up to a maximum of 0.3 m³ daily.

*Dimensions: 9 cm x 5 cm x 2 cm, stainless steel
Art.-No. hw 4711*

*plocherkat small (click version)
Dimensions: 9 cm x 5 cm x 2 cm, stainless steel
Art.-No. hw 4911*

plocherkat small



plocher reactor

The plocher reactor takes over the function of private water vitalisation for residential complexes with a total water consumption of 8 m³ – 12 m³ daily.

*Housing: Stainless steel
Connection size (R): 2"
Size: 50 cm x 22 cm Ø
Weight: 8.7 kg
Art.-No. hw 4311*

plocher reactor



...also ideal for the office!

plocher tablekat

Exclusive table model for the conference table, bar or counter, home, surgery and office. The effect is the same as the plocherkat. Place your cup, mug or glass on the plocher tischkat for just a few minutes - and you will be able to enjoy your drink to the full!

*Dimensions: 27 cm x 22 cm, stainless steel
Art.-No. hw 4811*

plocher drinking bottle

Made of stainless steel to vitalise drinking water, making it like spring water: Produced using ROLAND PLOCHER® integral-technik. The fast and easy closing system with the raisable drinking opening is particularly practical. The plocher drinking bottle – can accompany you everywhere and support your fitness! Precaution: Wash by hand only!



*Art.-No. hk 8712 – Unit: Bottle
Capacity: c. 0.5 litre
Dimensions: c. H 225 x Ø 60 mm.*

Can also be used as a carafe.

plocher thermos bottle

- double-walled made of stainless steel to vitalise hot and cold drinks
 - manufactured using the ROLAND PLOCHER® integral technology.
 - plastic lid with secure screw cap and integrated opening for drinking.
- Tip: Can also be used as a shaker cup



*Art.-No. hk 8713 - Unit: piece
Capacity: approx. 0.4 liters
Dimensions: approx. H 19.5 x ø 7 cmcm*

For agricultural use:

Spring water structure for the soil and plants
via the field sprayer:



*Vital to us all and yet
often neglected - the water quality!*



plocher agro-kat
for field sprayer
up to 3000 l

plocher agro-kat
Size: 60 cm long, 22 cm Ø
Weight: 6 kg
Art. No. aw 4511

plocher agro-kat xl
for field sprayer from
c. 3000 l upwards

plocher agro-kat xl
for large-scale farms and contractors
Size: 80 cm long, 22 cm Ø
Weight: 8.7 kg
Art. No. aw 4411

Material: V4A stainless steel/PVC, thread: 2", pressure tested: 30 bar

**Reduction in spraying by vitalising water and stabilising
the degree of hardness**

Effects on the business and work management
less pesticide – less plant stress,
more soil activity - healthy plants = ecological as well as profitable.

**Excerpt from the article (L&F Nr. 17/25.04.2014) by Jörg Garrelts,
State Plant Protection Service of the Lower Saxony Chamber of
Agriculture:**

In practice the influence of water quality is often underestimated. Filter blockages, insufficiently dissolved pesticides, inferior efficiency, unstable spraying liquid as well as decomposition of the active substances are reinforced when hard, cold, extremely acidic or alkaline water is used. In 2013 the Plant Protection Service conducted a trial in order to collect information concerning the effects on the application quality. For this purpose a comparison was made between the use of soft water (water hardness 4.0 °dH) and hard water (33.2 °dH) in combating various types of fungal diseases on winter wheat crops. Furthermore, the „plocher agro-kat“ system was appraised.

Results with the plocher agro-kat:

- best yield
- less fungal infection
- higher proportion of green leaf surface

Protection against electrosmog and geopathogenic zones



plocher e-smog-angle

Protection against electro smog.
Electricity creates energy in a magnetic field. These fields can have a negative effect on people, animals and plants. The plocher e-smog-angle converts these energy fields into a form which is tolerable for the organism.

Dimensions: 3 cm x 3 cm x 10 cm, stainless steel
Art.-No. ha 6111



plocher harmonizer

The specially informed interior life of the earthenware disc harmonises geo-pathogenic zones (e. g. via water veins), i.e. they are converted into a constructive and vitalising ambient energy field. Depending on the situation, it can have an effect within a 29-metre-radius of the earthenware disc.

Dimensions: Ø 21 cm, earthenware
Art.-No. ha 5111

plocherkat
EXPERIENCE REPORTS



Decalcification of the electric water heater

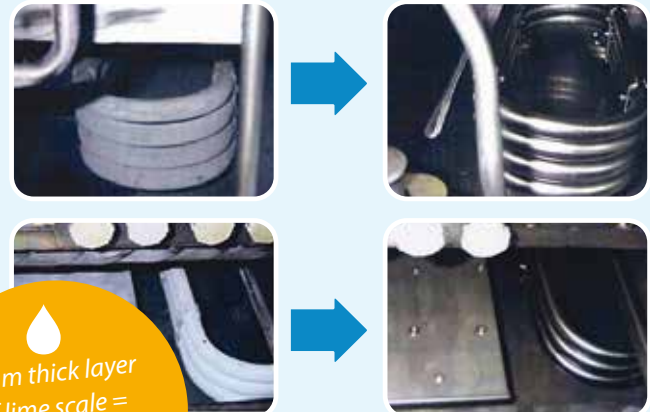
10 years ago we installed the plocherkat in our experience report of 15.12.1997 we informed you about the positive effects of the plocherkat, including its effect on the lime scale deposits in the 300 litre electric water heater. Before we had your plocherkat, we used to have to remove the heating element, at the latest after 3 years, to decalcify it, as the hard lime scale deposits on the heating rod became so thick that it was no longer possible to pull it through the flange hole. Tremendous effort was required to remove the extremely hard lime scale deposit layer by layer, using mechanical and chemical means. It took c. 10 hours to complete the process. 4 years after the last boiler service, we now removed the heating element again from the boiler and were extremely surprised as well as pleased, of course, to see the state of the heating element and the boiler wall.

The heating pipe undersides were virtually free of lime scale deposits and the deposits on the top were so light that you could simply rub them off with your finger. And this is with water hardness of c. 43 French hardness degrees (corresponds to c. 24 German hardness degrees) and 58 °C water temperature.

We are fully aware of the fact that this lime transformation is just a positive side-effect of the plocherkat. In fact we purchased the plocherkat mainly for its primary properties and are profoundly grateful to you, Mr Plocher, for your research and the products - in absolute harmony with nature - which have ensued from this.

Warm regards to you you and your team from Beatrice and Walter Macho

Practical test in an industrial kitchen in Düsseldorf
Very viable - also from a commercial point of view



1 mm thick layer of lime scale = 10% – 12% higher energy requirement

3 months later with plocherkat

plocherkat in the heating system

An interesting study conducted at the University of Applied Sciences in Munich proves that vitalised water also heats up more quickly and therefore reduces gas consumption:

The trial lasted 72 hours, 2 identical strands were compared, flow rate 21.583 m³ (= c. 50 l / min).

Gas consumption for an average selected temperature of 78.6 °C:

- Strand (control) 218.015 m³ gas
- Strand with plocherkat 213.38 m³ gas
= 2,13 % lower consumption!

Influence of physically modified water on germination



Tap water



plocherkat water

Source: Bachelor dissertation within the scope of a horticultural sciences study programme: „Influence of modified water on plant growth“ Humboldt University, Berlin

BACK TO THE STRUCTURE OF

SPRING WATER

Droplet images according to Ruth Kübler

The qualities according to which the droplet images are evaluated:

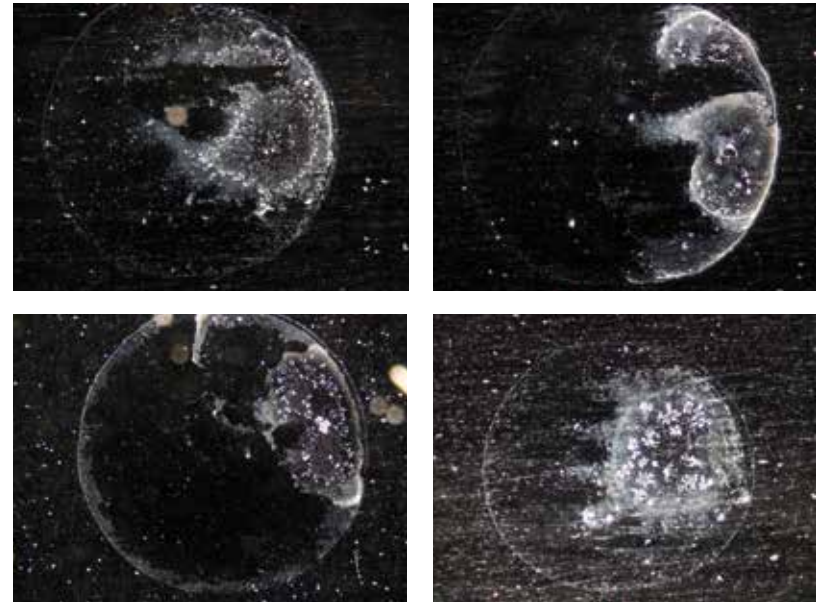
- order / differentiation / radiance
- transparency / clearness / fineness
- form / formation
- alignment
- integration capacity
- intensity
- rhythm
- movability
- structure stability / coherence

Certain conclusions can be drawn either from the presence or the absence of these qualities which the water needs to regenerate or restore.

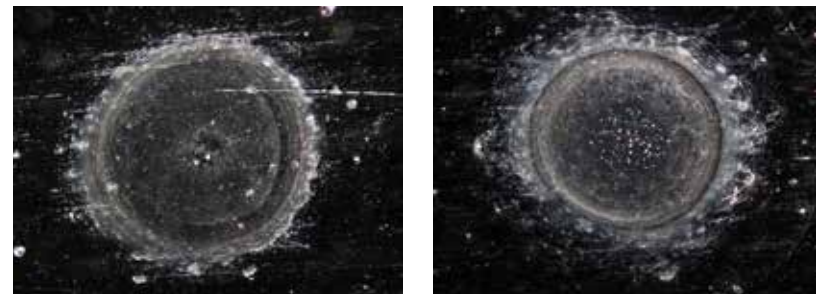


Laboratory for crystal analysis and quality evaluation
Dr. med. vet. Wilhelm Höfer –
Berthold Heusel M.A.

Romäus spring water was filled into a plastic bottle and - in warm summer temperatures - left in a car for 2 days. The droplet images show a disturbance in the structure of the spring water



Re-established with the plover towel after a period of c. 7 – 10 minutes.



Observation:

It is clearly recognisable that order structures have been re-established.

In the droplet image the crystallisation has been aligned.

It is possible to differentiate between 7 zones.

Order / alignment / differentiation / transparency / clearness / fineness / intensity / formation / rhythm and structure stability can be described as good.

QUESTIONS & ANSWERS

Based on the knowledge and the experience that it is not the materials which produce the effects but rather their energetic information, in 1980 Roland Plocher developed a naturally compatible, resource-saving, physical process of transferring non-magnetic information for the purposeful, catalytic activation of biological processes.



Installation example: plocherkat mounted in serial formation

How does the plocherkat work?

The plocherkat is constructed in such a way that it can transmit vitalising information to the water. This stimulates the water's memory, i.e. certain clusters (molecular chains) are activated and brought into balance so that, on the one hand, the vitalisation and, on the other hand, stabilisation of the hardness is achieved. The plocherkat works without any magnetic, chemical or electrical influence.

What is in the plocherkat

The plocherkat contains an inlay which is modulated with the information of spring water and oxygen.

How and where should I install the plocherkat?

The plocherkat should be installed after the water metre and the pressure regulator flush against the pipe, according to the installation instructions. 15 cm of free piping is sufficient for installation. It is not necessary to interfere with the water-pipe system. The pipe should be completely clean and free of any rust and dirt. Several plocherkat can be mounted in serial formation (see installation example photo) or, depending on circumstances where it is being installed, a decentralised distribution may be recommendable

Up to what pipe diameter is suitable for the plocherkat?

The installation plates of the plocherkat large are designed for 1/2 to 2 inches.

Can I lean the plocherkat against the wall?

No, the plocherkat should be attached by the plates to the pipes so that it hangs „free“ in the air and not lean against anything.

Do I have to observe a particular installation direction?

The different screw hole positions make it possible to install the plocherkat in all possible variations - vertically or diagonally to the pipe.

Is it worth installing a plocherkat to the hot water circulation of the heating system?

The plocherkat small is extremely suitable for this purpose. Simply mount it on one of the heating circulation pipes. The benefits will be active water, improved thermal yield, less slurry; deposits on actuators and thermostats can be reduced.

My aerators and sieves are suddenly blocked up, why?

Unscrew the aerators and prepare yourself for a surprise - the sieve is not scaled up in the usual way. Rather dislodged deposits are blocking up the sieve!

What is hardness stabilisation? What happens with the lime?

Hardness stabilisation is natural physical behaviour, in the course of which crystallisation of the water components is altered to such an extent that the crystals no longer form stable chains. There is no more aggressive lime scale or boiler scale. The crystals are in individual formation and can be removed easily. The crystals, moreover, are 200 times smaller in formation and are therefore easier to flush out. Aggressive lime compounds, such as magnesium sulphate or calcium sulphate, are very much reduced or do not occur at all. It could be said that the lime scale is no longer active (see page 5).

Basically it functions well. But just in my pressure cooker and my kettle, I now have hard deposits. Why?

In the pressure cooker the temperature goes up to over 100 °C, and high pressure is created. Under these conditions the lime begins to precipitate into boiler scale.

In the kettle a certain amount of water often remains and this is boiled up again with fresh water. So the solution is to empty the kettle completely after using it to boil water, wipe away any lime scale and occasionally boil up water with a few drops of plocher all-purpose cleaner.

After installing a new photovoltaic system we had more lime scale again. Is that possible?

For many years we have been enjoying vital water out of our tap. In addition we had noticed a significant improvement in lime scale deposits. Following the installation of a photovoltaic system on the roof of our house, however, we noticed increased lime scale deposits on our taps, very probably due to parallel routing of the pipes. Mounting plocher e-smog-angle didn't lead to any satisfactory result, either. It only was after erecting a plocher harmonizer that we were able to notice the effect we had known prior to installation of the photovoltaic system (Fam. Rinkleff).

What is the lifespan of the plocherkat?

Prototypes have been in use since 1986 and are still very effective!

CREATE & PRESERVE RESOURCES

ROLAND PLOCHER® *integral-technik* is in conformity with fundamental scientific requirements. Its distinguishing feature is the ability to sustainably revitalise destroyed biological processes in all parts of the environment **soil – water – air ecologically and economically**



Since May 2013 the **quality management** of PLOCHER GmbH has been **certified** for the scope of application: sales of ecological, catalytic products.



Ground water protection concerns us all!

And everyone can make a contribution:

By using water economically via a responsible use of detergents to refraining from using synthetic-chemical products in the garden, in agriculture and in forestry. PLOCHER-Products offer many different possibilities for an ecological lifestyle. Just ask - we will be pleased to advise you!



water reserve

First of all determine the current state before using the plocherkat:
Local water hardness corresponds to c. _____ °dH

Problems with lime scale deposits? (please put a cross)

BEFORE: very big big minor none

AFTERWARDS: very big big minor none

How often do you have to remove lime scale deposits thoroughly from your household appliances?

BEFORE: weeks AFTERWARDS: weeks

1. Aerators _____ 1. Aerators _____

2. Pots _____ 2. Pots _____

3. Coffee machine _____ 3. Coffee machine _____

4. Taps _____ 4. Taps _____

5. _____ 5. _____

What subjective changes were you able to ascertain relating to ...?

Lime scale (easier to remove): _____

Water taste: _____

Food (taste): _____

Washing powder (more economical use): _____

Laundry (softer): _____

Time and effort required for cleaning: _____

Skin and hair (feel, appearance, care): _____

Plants (appearance, vitality): _____

Animals (appearance, well-being, higher water consumption): _____

PLOCHER®



Range of application in the hotel and catering trade:

See-Hotel Off in Meersburg serves its guests vitalised drinking water.
www.seehotel-off.de

Would you like to offer your guests vital water, too? We would be pleased to advise you and compile an individual offer to suit your requirements.



Do a test:

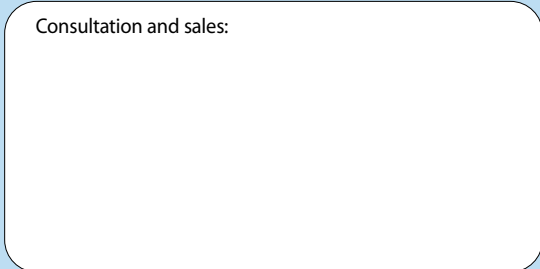
Ask for our free cardboard test coaster for aroma and water vitalisation. Compare the aroma and taste after just a few minutes!

PLOCHER – so that good becomes even better!



**PLOCHER GmbH • integral-technik • Torenstraße 26
DE-88709 Meersburg • Tel.: +49 (0) 7532/4333-0
Fax: 4333-10 • info@plocher.de • www.plocher.com**

Consultation and sales:



We support companies which make an effort to protect the environment: This catalogue is printed using food-grade inks and provided with a mineral oil migration free print varnish.

We reserve the right to make further developments to the product as well as implement changes regarding the packaging, price and size. We are not liable for any printing errors which may occur.

Photo credit: shutterstock.de